



*Iowa State University Program for
Women in Science and Engineering
Presents:*

GO FURTHER

GIRLS STEM CONFERENCE

October 30th, 2025



WELCOME



Welcome to Iowa State University and the Go Further Girls STEM Career Conference! The Program for Women in Science and Engineering(WiSE) at Iowa State University has held this conference since 1987, with over 65,000 students who have attended.

Today, we invite you to share in our vision of what it means to “Be WiSE.” Being WiSE goes beyond participating in Go Further...it means:

Empowering each other
Persevering through obstacles
Taking risks
Being open to others’ perspectives
Valuing difference
Leading the change



What does “Being WiSE” mean to you? How can you “be WiSE” about your future?

We encourage you to reflect on these questions today.
Thank you for joining us!

FOUR SEASONS FOUNTAIN



WEST
MORRILL ROAD



NORTH SECOND FLOOR

EAST

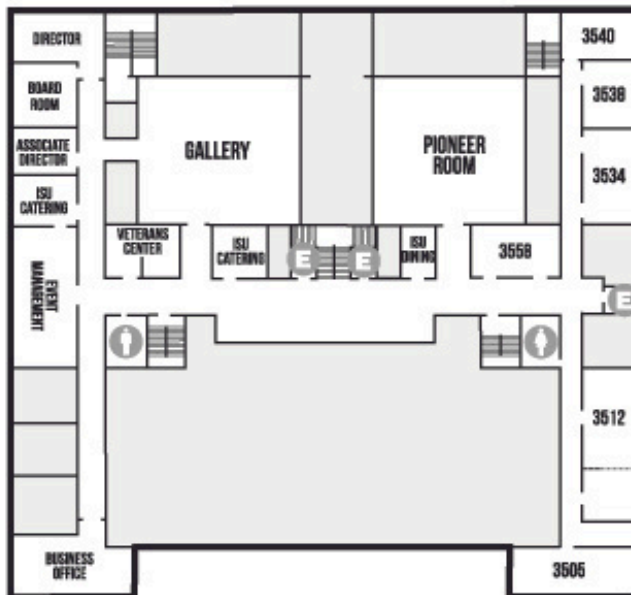
SECOND FLOOR
PARKING RAMP

LINCOLN WAY



FOUR SEASONS FOUNTAIN

WEST
MORRILL ROAD



NORTH THIRD FLOOR

EAST

PARKING RAMP
THIRD FLOOR

LINCOLN WAY

Keynote Speaker:



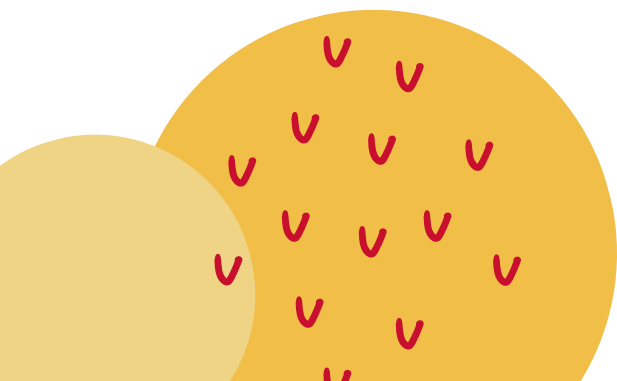
Emily Warring

Emily Warring is a junior in Aerospace Engineering with minors in Non-Destructive Evaluation and Leadership Studies. She is originally from Harris, Minnesota. At Iowa State University, Emily is involved in the Women in Aerospace Engineering Community Group for the Women in Science and Engineering Program (WiSE), giving college of engineering tours with The Engineering Ambassador and Mentorship Program (TEAM), and she plans the Society of Women Engineers' trip to the national conference and their end-of-year banquet! In her free time, she enjoys baking, cooking, reading a good mystery book, hanging out with family and friends, being adventurous, and trying new things!



Schedule Overview:

- Keynote Speakers: 9:15-9:30 AM
- Career Session 1: 9:40-10:25 AM
- Career Session 2: 10:30-11:15 AM
- Lunch: 11:20AM- 12:10PM
- Career Session 3: 12:15-1:00 PM
- Career Session 4: 1:05-1:50 PM
- Closing Announcements: 1:55-2:00 PM
- Optional Student Panel: 2:10-2:40 PM



Career Session 1: 9:40 - 10:25 AM

**B. Cardinal Room — Paper Roller Coaster Masters
(Double Session)**

**D. Gold Room — Stop Aquatic Hitchhikers:
Working with Aquatic Invasive Species**

E. Room 3512 — STEM International Perspectives

**F. Room 2630 — Duties of a State Conservation
Officer**

**G. Room 3534 — Phenomenal Science: Skills to
Build your Innovative Edge**

H. Room 2210 — Popsicle Stick Bridge

I. Room 3540 — Plants Get Sick Too

**J. Room 3560 — Candy Quest: Unlock Your Inner
Industrial Engineer**

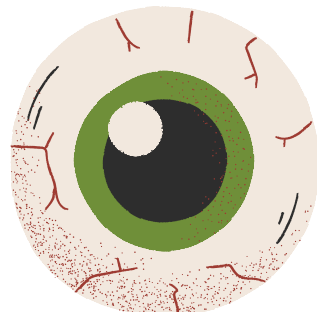
K. Great Hall — Snack Hack : Code Like a Foodie

**L. Great Hall — Plant your Future: Sustainable
Horticulture**

M. Great Hall — Creativity, Innovation, and You

**N. Great Hall — Science + Art! A Perfect
Combination in STEAM!**

O. Great Hall — Glassblowing Demo



Career Session 2: 10:30 - 11:15 AM

- A. Campanile Room — The Women Of ISU Chemistry (& How They Got Here)
- B. Cont. from Session 1 — Paper Roller Coaster Masters
- D. Gold Room — Stop Aquatic Hitchhikers: Working with Aquatic Invasive Species
- E. Room 3512 — Discover the world of food science and human nutrition through a case-based interactive activity!
- F. Room 2630 — Duties of a State Conservation Officer
- G. Room 3534 — Phenomenal Science: Skills to Build your Innovative Edge
- I. Room 3540 — Plants Get Sick Too
- J. Room 3560 — Candy Quest: Unlock Your Inner Industrial Engineer
- K. Cont. from Session 1 — Snack Hack : Code Like a Foodie
- L. Cont. from Session 1 — Plant your Future: Sustainable Horticulture
- M. Cont. from Session 1 — Creativity, Innovation, and You
- N. Cont. from Session 1 — Science + Art! A Perfect Combination in STEAM!
- O. Cont. from Session 1 — Glassblowing Demo



Career Session 3: 12:15 - 1:00 PM

- A. Campanile Room — The Physics of Rocketry
- B. Cardinal Room — Energizing Electricity - Nuclear Power in Your Everyday Life
- C. Room 3580 — Molecular spaghetti: from gummy bears to body armor
- D. Gold Room — Roller Coasters
- E. Room 3512— Understanding Scale, Renewable and Non-Renewable Energy Lego Activity
- G. Room 3534 — Changing the Atmosphere in Atmospheric Science
- H. Room 2210 — Go Further into Microbial Ecology
- J. Room 3560 — Technology and Automation at Bayer Crop Science
- K. Great Hall — Build Your Future: Code Your Own Amazing Resume!
- L. Great Hall — Explore Materials Engineering! (It's no accident - materials are engineered to perform!)
- M. Great Hall — SAE International Vehicle Assembly
- N. Great Hall — MicroMarvels: A Hands-On Journey into the Microbial World



Career Session 4: 1:05 - 1:50 PM

A. Campanile Room — The Physics of Rocketry

B. Cardinal Room — Energizing Electricity -
Nuclear Power in Your Everyday Life

C. Room 3580 — Molecular spaghetti: from
gummy bears to body armor

D. Gold Room — Roller Coasters

E. Room 3512— Understanding Scale, Renewable
and Non-Renewable Energy Lego Activity

H. Room 2210 — Agronomy and NASA?

J. Room 3560 —Technology and Automation at
Bayer Crop Science

K. Cont. from Session 3 — Build Your Future:
Code Your Own Amazing Resume!

L. Cont. from Session 3 — Explore Materials
Engineering! (It's no accident - materials are
engineered to perform!)

M. Cont. from Session 3 — SAE International
Vehicle Assembly

N. Cont. from Session 3 — MicroMarvels: A
Hands-On Journey into the Microbial World

Conference T-Shirts



\$20

Get Yours in The Great Hall

Cash/checks accepted. Checks should be
made payable to Iowa State University.



Evaluations

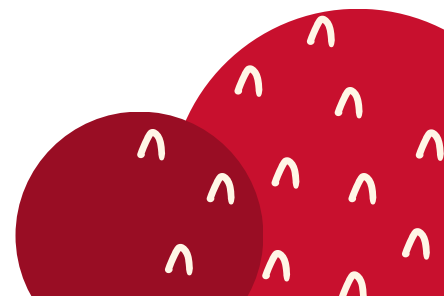
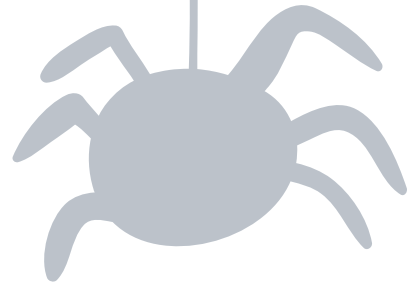
Evaluations are very important to us, and allow us to make the next conference even better. Please follow these link to an online survey.

Please take time to answer our questions and provide feedback.

Coordinator Evaluations:

Available in WorldWiSE following the conference!

Student Evaluations:



Follow Us on Social:



@wise_isu

Check Out our Website:

WiSE at ISU

Go Further Conference



Visit Our Office:

3024 Morrill Hall

Iowa State University

Iowa State Admission and Student Organization

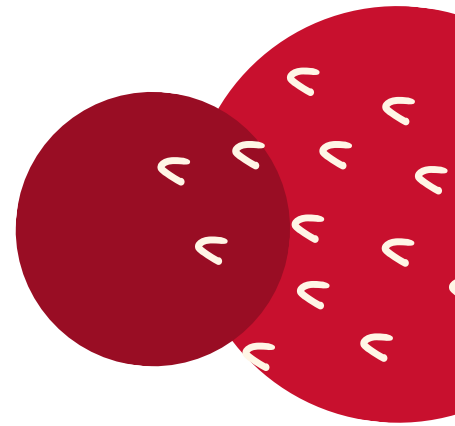
Learn more about our
participating student
organizations:

- American Institute of Chemical Engineers
- American Meteorological Society
- American Society of Civil Engineers
- Engineering Ambassador Network
- Gaffer's Guild
- Graduate Society of Women Engineers
- Microbiology Graduate Student Organization
- Society of Chemistry Undergraduate Majors(SCUM)

Information

Learn more about
majors and admissions
at Iowa State:

- Majors at ISU
- Admission Requirements



Memorial Union Emergency Information

Severe Weather:

Proceed to the Food Court (1st floor) or the nearest interior room on a lower level. Keep away from exterior doors and windows.

Fire/Evacuation:

Take the nearest exit to leave the building and proceed to the emergency meeting location, Four Seasons Fountain (North).

Safety Guidelines:

- **AED/Defibrillator locations:**

- 1st Floor - near ISU Bookstore entrance

- 2nd Floor - near Campanile Room

- Familiarize yourself with the location of exits, alarm pull stations, and fire extinguishers.

- Attempt to control a fire yourself with a fire extinguisher only when the fire is small and you have been trained.

- Keep fire doors closed to prevent the spread of smoke and fire.



In the event of an emergency, Call 911. Be prepared to inform the dispatcher of your exact campus location and that you need to be connected to ISU Police.

THANK YOU

WiSE CORPORATE PARTNERS



Special Thanks



to
WiSE Visionary Sponsor

