

*Iowa State University Program for
Women in Science and Engineering
Presents:*

GO
FURTHER
STEM CONFERENCE

November 6th, 2025



WELCOME

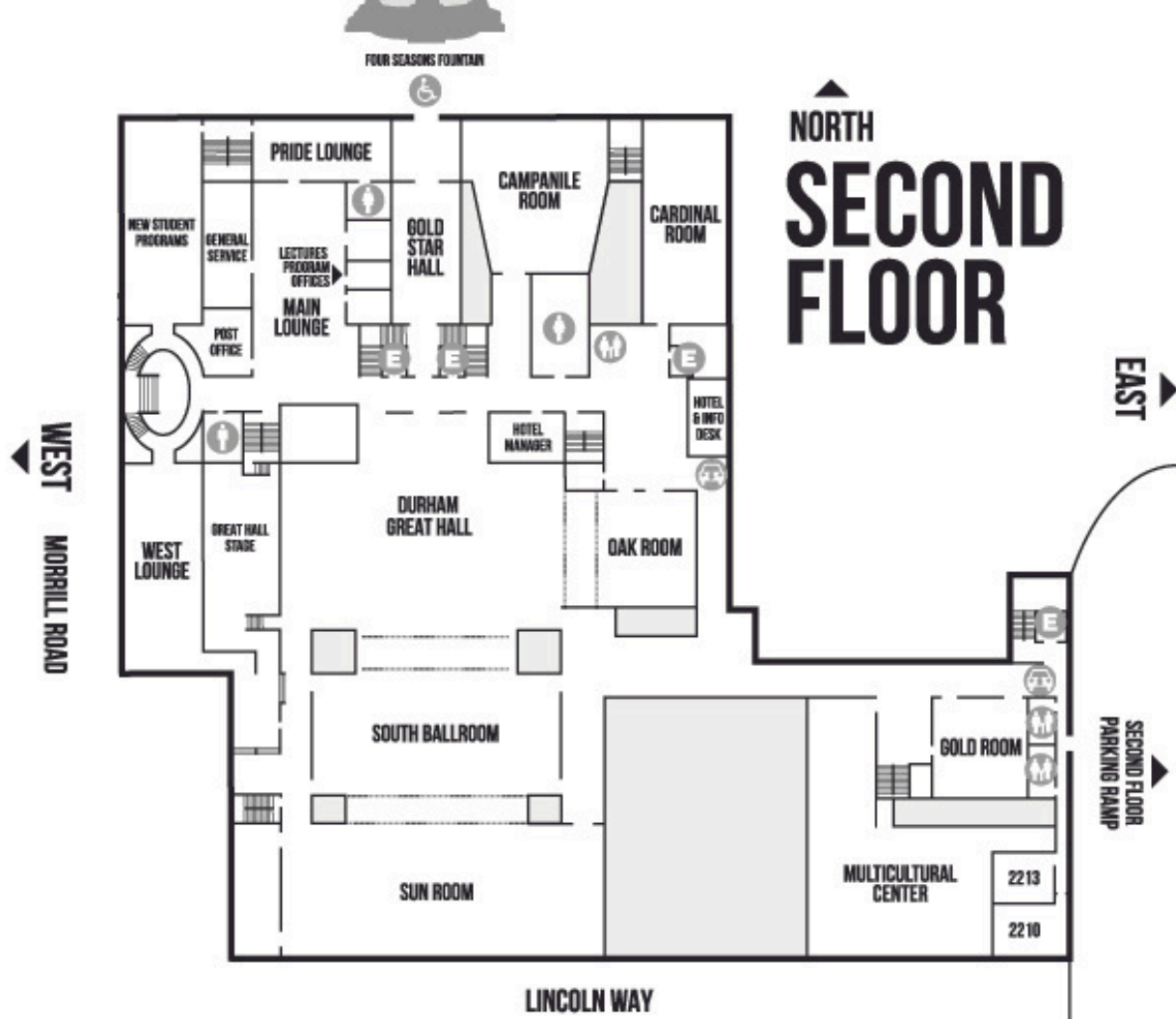
Welcome to Iowa State University and the Go Further Girls STEM Career Conference! The Program for Women in Science and Engineering(WiSE) at Iowa State University has held this conference since 1987, with over 65,000 students who have attended.

Today, we invite you to share in our vision of what it means to “Be WiSE.” Being WiSE goes beyond participating in Go Further...it means:

Empowering each other
Persevering through obstacles
Taking risks
Being open to others’ perspectives
Valuing difference
Leading the change

What does “Being WiSE” mean to you? How can you “be WiSE” about your future?

We encourage you to reflect on these questions today.
Thank you for joining us!



Keynote Speaker:

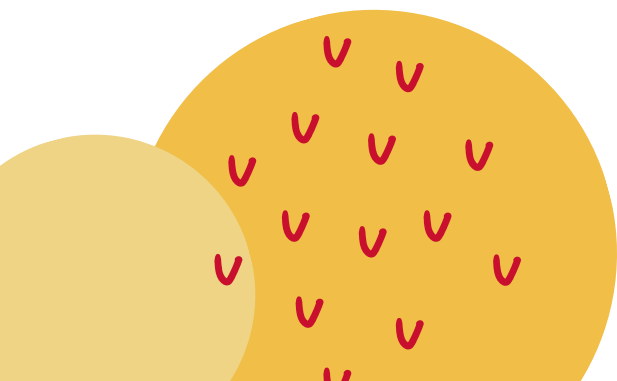


Emily Warring

Emily Warring is a junior in Aerospace Engineering with minors in Non-Destructive Evaluation and Leadership Studies. She is originally from Harris, Minnesota. At Iowa State University, Emily is involved in the Women in Aerospace Engineering Community Group for the Women in Science and Engineering Program (WiSE), giving college of engineering tours with The Engineering Ambassador and Mentorship Program (TEAM), and she plans the Society of Women Engineers' trip to the national conference and their end-of-year banquet! In her free time, she enjoys baking, cooking, reading a good mystery book, hanging out with family and friends, being adventurous, and trying new things!

Schedule Overview:

- Keynote Speakers: 9:15-9:30 AM
- Career Session 1: 9:40-10:25 AM
- Career Session 2: 10:30-11:15 AM
- Lunch: 11:20AM- 12:10PM
- Career Session 3: 12:15-1:00 PM
- Career Session 4: 1:05-1:50 PM
- Closing Announcements: 1:55-2:00 PM
- Optional Student Panel: 2:10-2:40 PM



Career Session 1: 9:40 - 10:25 AM

**B. Cardinal Room — Paper Roller Coaster Masters
(Double Session)**

**C. Room 3580 — The Women of ISU Chemistry (&
How They Got Here)**

**D. Gold Room — Hotel LEGO: Engineering in the
Building and Construction Industry**

E. Room 3512 — Smelling Parkinson's

**F. Room 2630 — Duties of a State Conservation
Officer**

G. Room 3534 — Plants Get Sick Too

H. Room 2210 — STEM & Hospitality Management

K. Room 2213 — Think it, Print it

**L. Room 3560 — Candy Quest: Unlock Your Inner
Industrial Engineer**

**M. Great Hall — Cyclone secrets: Unlocking tornado
mysteries**

**N. Great Hall — Discovering Agronomy - the world of
plants and soils**

**O. Great Hall — Introduction to Robotics and
Programming**

P. Great Hall — Glassblowing Demo

Career Session 2: 10:30 - 11:15 AM

- A. Campanile Room — Hatching Careers in Poultry
- B. Cont. from Session 1 — Paper Roller Coaster Masters
- C. Room 3580 — The Women of ISU Chemistry (& How They Got Here)
- D. Gold Room — Hotel LEGO: Engineering in the Building and Construction Industry
- F. Room 2630 — Duties of a State Conservation Officer
- G. Room 3534 — Plants Get Sick Too
- K. Room 2213 — Think it, Print it
- L. Room 3560 — Candy Quest: Unlock Your Inner Industrial Engineer
- M. Cont. from Session 1 — Cyclone secrets: Unlocking tornado mysteries
- N. Cont. from Session 1 — Discovering Agronomy - the world of plants and soils
- O. Cont. from Session 1 — Introduction to Robotics and Programming
- P. Cont. from Session 1 — Glassblowing Demo

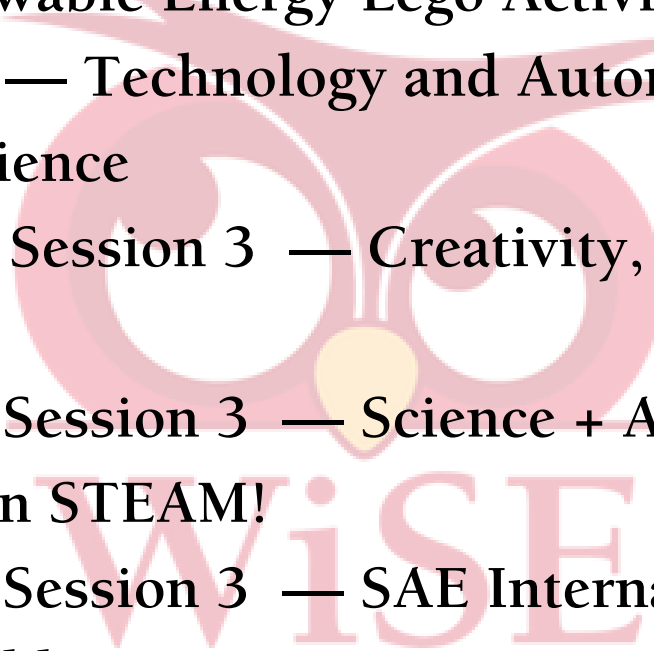


Career Session 3: 12:15 - 1:00 PM

- A. Campanile Room — The Physics of Rocketry
- B. Cardinal Room — Changing the Atmosphere in Atmospheric Science
- C. Room 3580 — Go Further into Microbial Ecology
- D. Gold Room — Roller Coasters
- E. Room 3512 — Understanding Scale, Renewable and Non-Renewable Energy Lego Activity
- L. Room 3560 — Technology and Automation at Bayer Crop Science
- M. Great Hall — Creativity, Innovation, and You
- N. Great Hall — Science + Art! A Perfect Combination in STEAM!
- O. Great Hall — SAE International Vehicle Assembly
- P. Great Hall — Snack Hack: Code Like a Foodie
- Q. Great Hall — SAE Formula Vehicle Assembly
- R. Great Hall — Aerodynamic Design Demonstration

Career Session 4: 1:05 - 1:50 PM

- A. Campanile Room — The Physics of Rocketry
- B. Cardinal Room — Agronomy and NASA?
- C. Room 3580 — Go Further into Microbial Ecology
- D. Gold Room — Roller Coasters
- E. Room 3512 — Understanding Scale, Renewable and Non-Renewable Energy Lego Activity
- L. Room 3560 — Technology and Automation at Bayer Crop Science
- M. Cont. from Session 3 — Creativity, Innovation, and You
- N. Cont. from Session 3 — Science + Art! A Perfect Combination in STEAM!
- O. Cont. from Session 3 — SAE International Vehicle Assembly
- P. Cont. from Session 3 — Snack Hack: Code Like a Foodie
- Q. Cont. from Session 3 — SAE Formula Vehicle Assembly
- R. Cont. from Session 3 — Aerodynamic Design Demonstration



Conference T-Shirts



\$20

Get Yours in The Great Hall



Cash/checks accepted. Checks should be
made payable to Iowa State University.



Evaluations

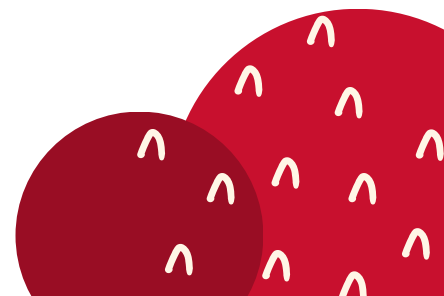
Evaluations are very important to us, and allow us to make the next conference even better. Please follow these link to an online survey.

Please take time to answer our questions and provide feedback.

Coordinator Evaluations:

Available in WorldWiSE following the conference.

Student Evaluations:

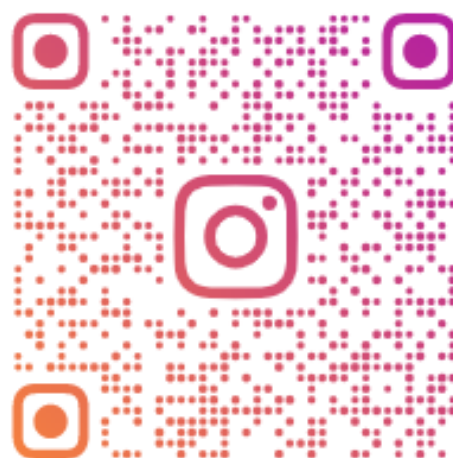


Connect With WiSE

Follow Us on Social:

Instagram: @wiseoutreach

@wise_isu



WISEOUTREACH

Check Out our Website:

WiSE at ISU

Go Further Conference



Visit Our Office:

3024 Morrill Hall

Iowa State University

**IOWA STATE
UNIVERSITY**

**Program for Women in
Science and Engineering**



Iowa State Admission and Student Organization

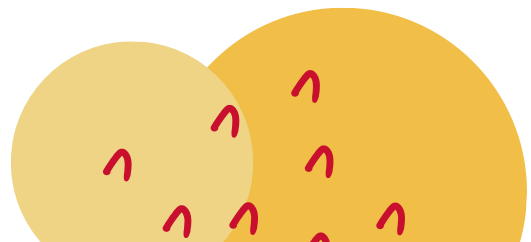
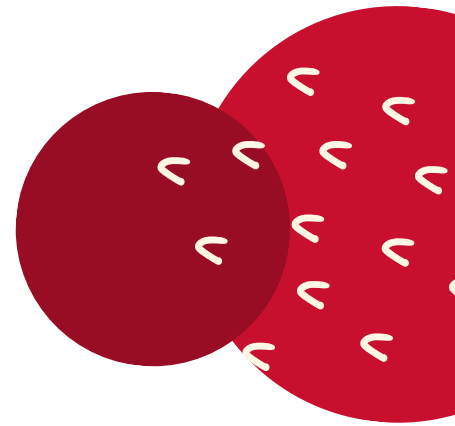
Learn more about our participating student organizations:

- American Institute of Chemical Engineers
- American Meteorological Society
- American Society of Civil Engineers
- Engineering Ambassador Network
- Gaffer's Guild
- Graduate Society of Women Engineers
- Microbiology Graduate Student Organization
- Society of Chemistry Undergraduate Majors(SCUM)

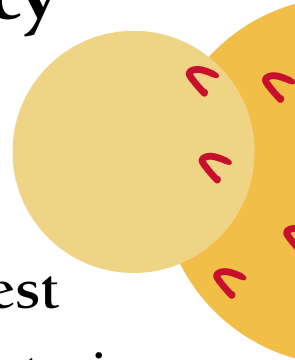
Information

Learn more about majors and admissions at Iowa State:

- Majors at ISU
- Admission Requirements



Memorial Union Emergency Information



Severe Weather:

Proceed to the Food Court (1st floor) or the nearest interior room on a lower level. Keep away from exterior doors and windows.

Fire/Evacuation:

Take the nearest exit to leave the building and proceed to the emergency meeting location, Four Seasons Fountain (North).

Safety Guidelines:

- AED/Defibrillator locations:

1st Floor - near ISU Bookstore entrance

2nd Floor - near Campanile Room

- Familiarize yourself with the location of exits, alarm pull stations, and fire extinguishers.
- Attempt to control a fire yourself with a fire extinguisher only when the fire is small and you have been trained.
- Keep fire doors closed to prevent the spread of smoke and fire.

In the event of an emergency, Call 911. Be prepared to inform the dispatcher of your exact campus location and that you need to be connected to ISU Police.

THANK YOU

WiSE CORPORATE PARTNERS



Special Thanks



to
WiSE Visionary Sponsor

